

sequential verification for concurrency

Noam Rinetzky

Queen Mary University of London

concurrency is hard

concurrency is hard

- design
- implement
- test
- debug
- measure
- ...
- verify

concurrency is hard!

“H”

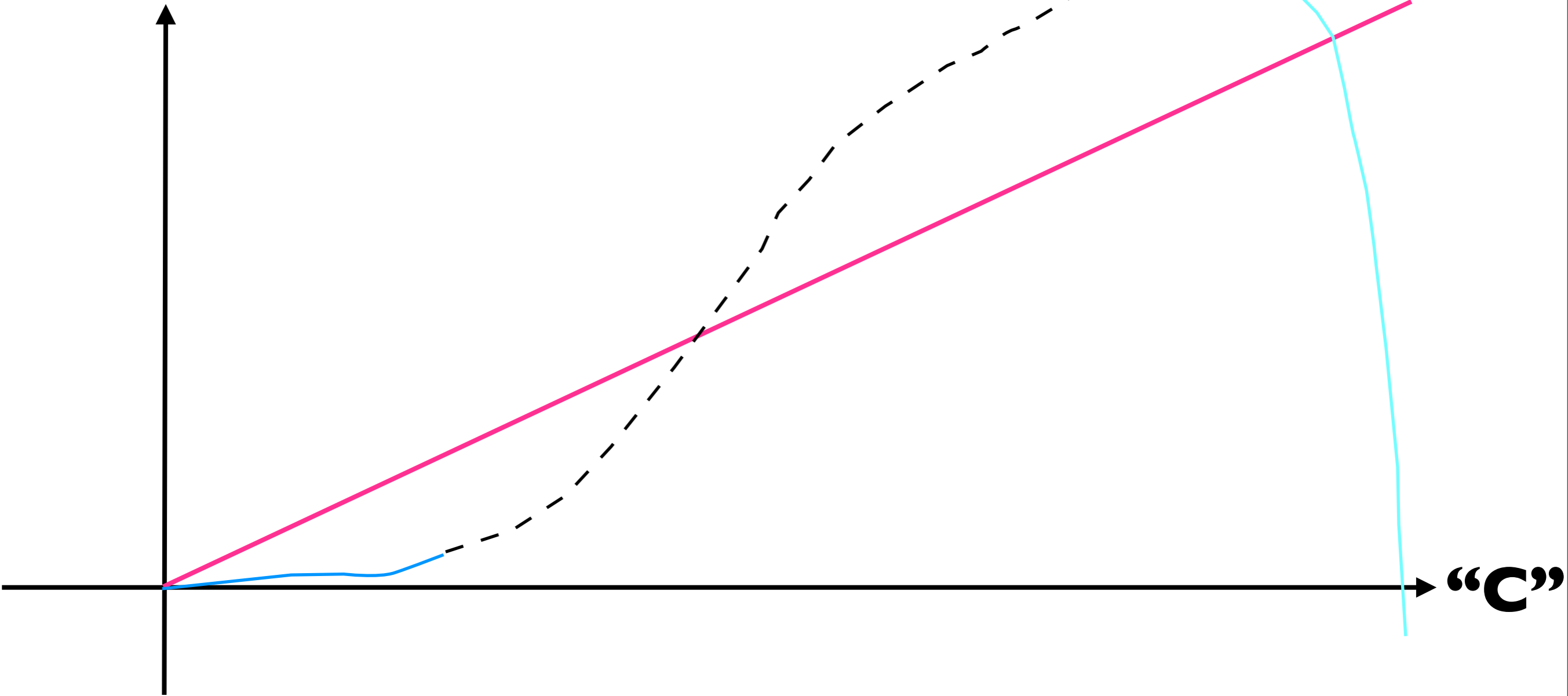


“C”

seq. \subseteq low conc. \subseteq medium conc. \subseteq high conc.

concurrency is hard! (?)

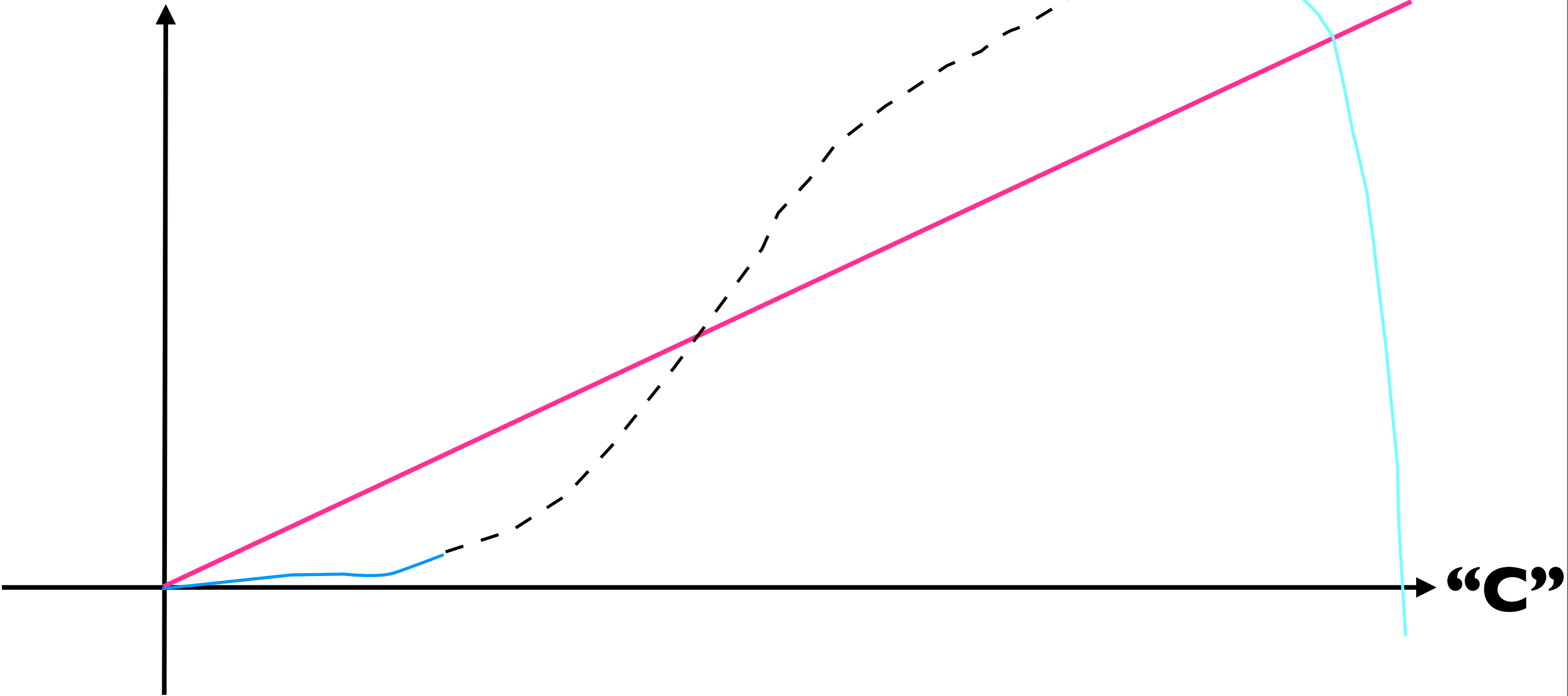
“H”



seq. \subseteq low conc. \subseteq medium conc. \subseteq high conc.

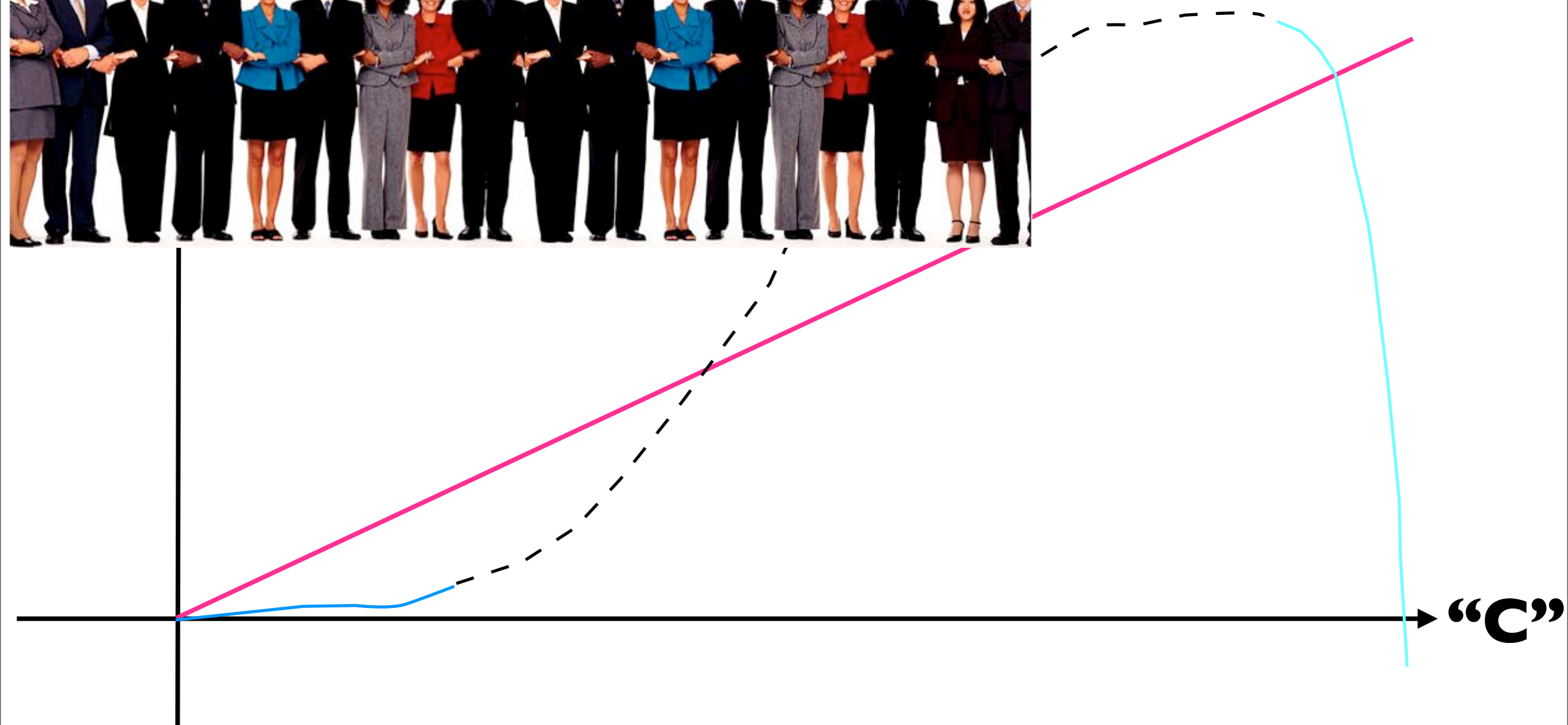
concurrency is hard! (?)

“H”



seq. \subseteq low conc. \subseteq medium conc. \subseteq high conc.

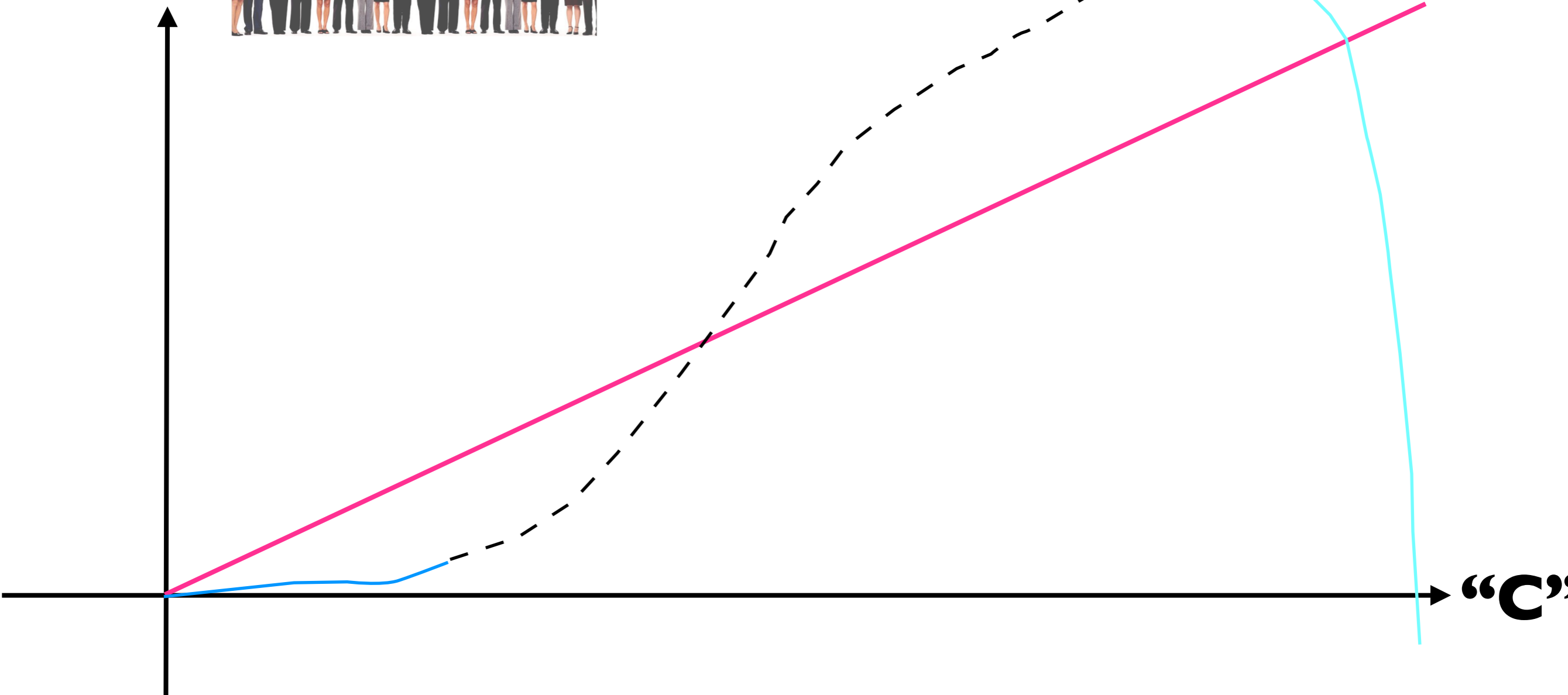
concurrency is hard! (?)



seq. \subseteq low conc. \subseteq medium conc. \subseteq high conc.

concurrency is hard! (?)

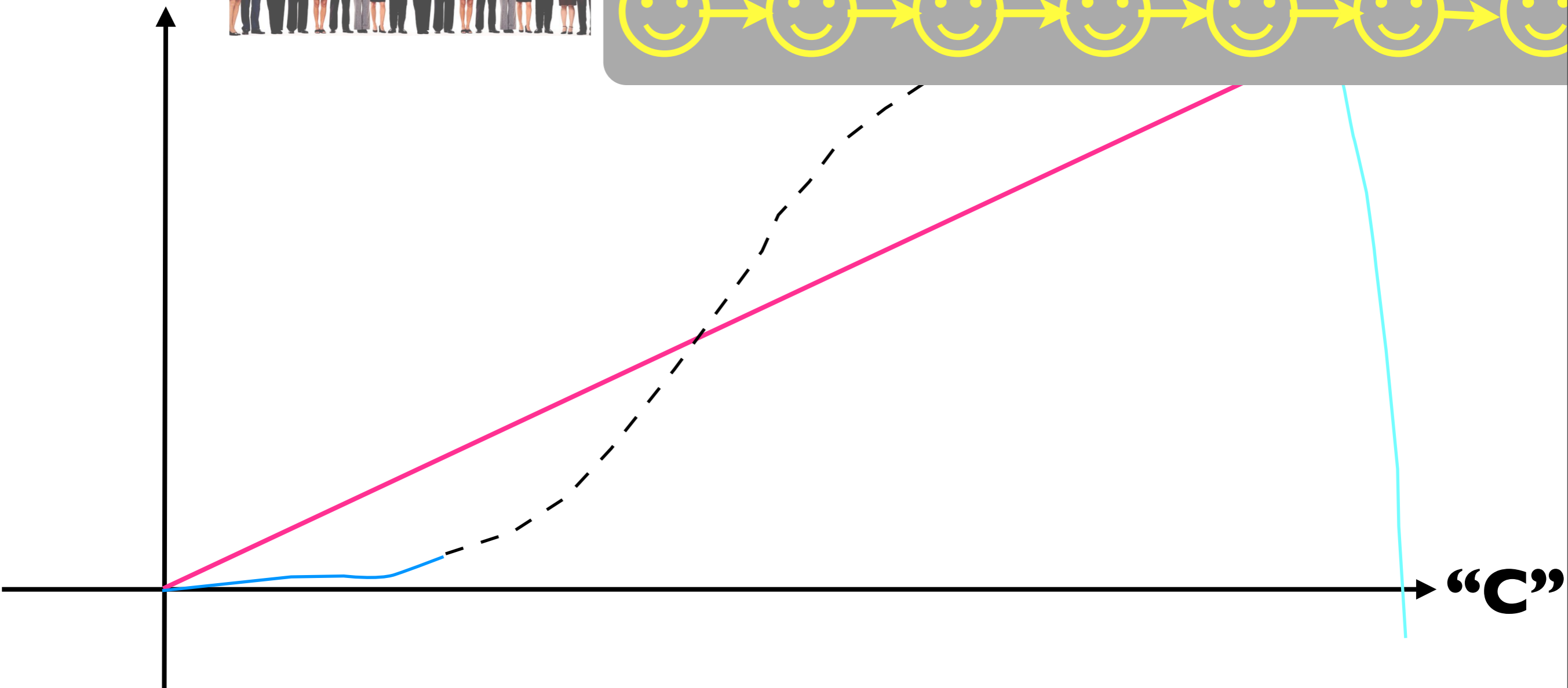
“H”



seq. \subseteq low conc. \subseteq medium conc. \subseteq high conc.

concurrency is hard! (?)

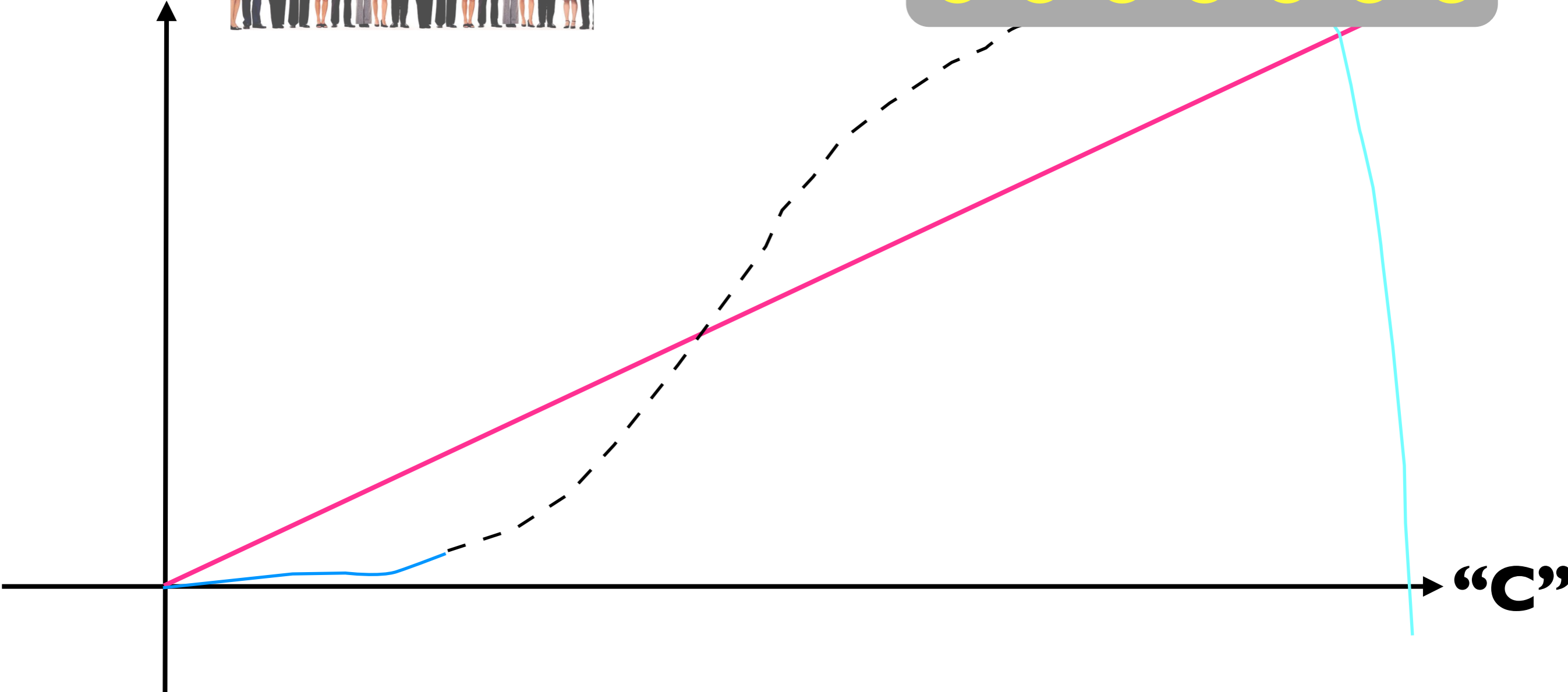
“H”



seq. \subseteq low conc. \subseteq medium conc. \subseteq high conc.

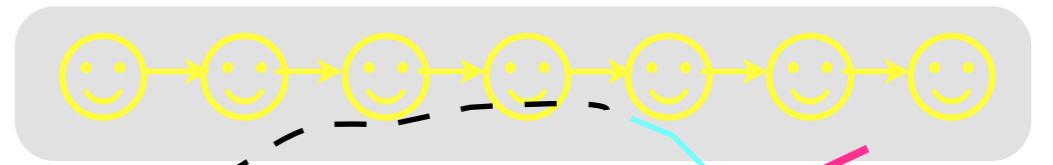
concurrency is hard! (?)

“H”

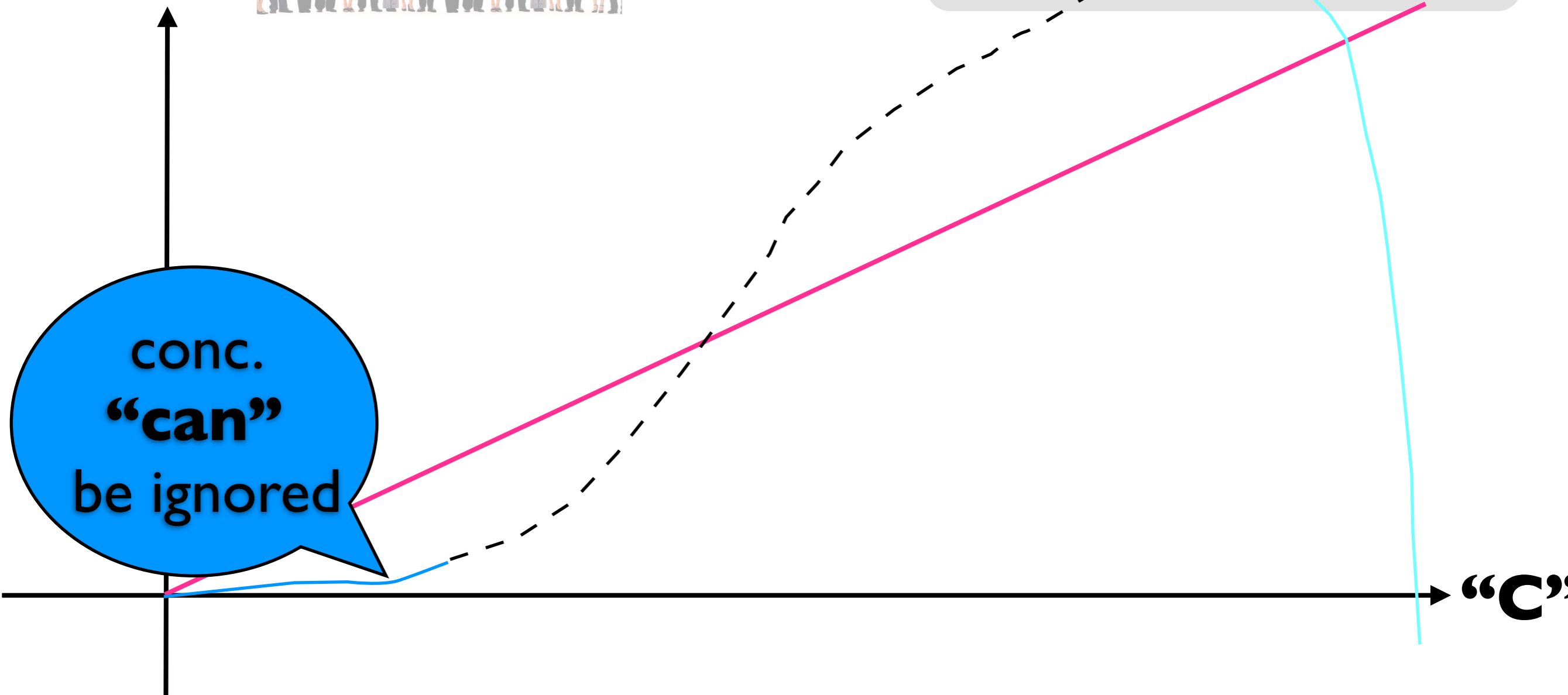


seq. \subseteq low conc. \subseteq medium conc. \subseteq high conc.

concurrency is hard! (?)



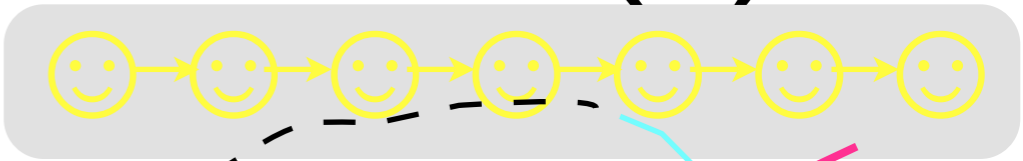
“H”



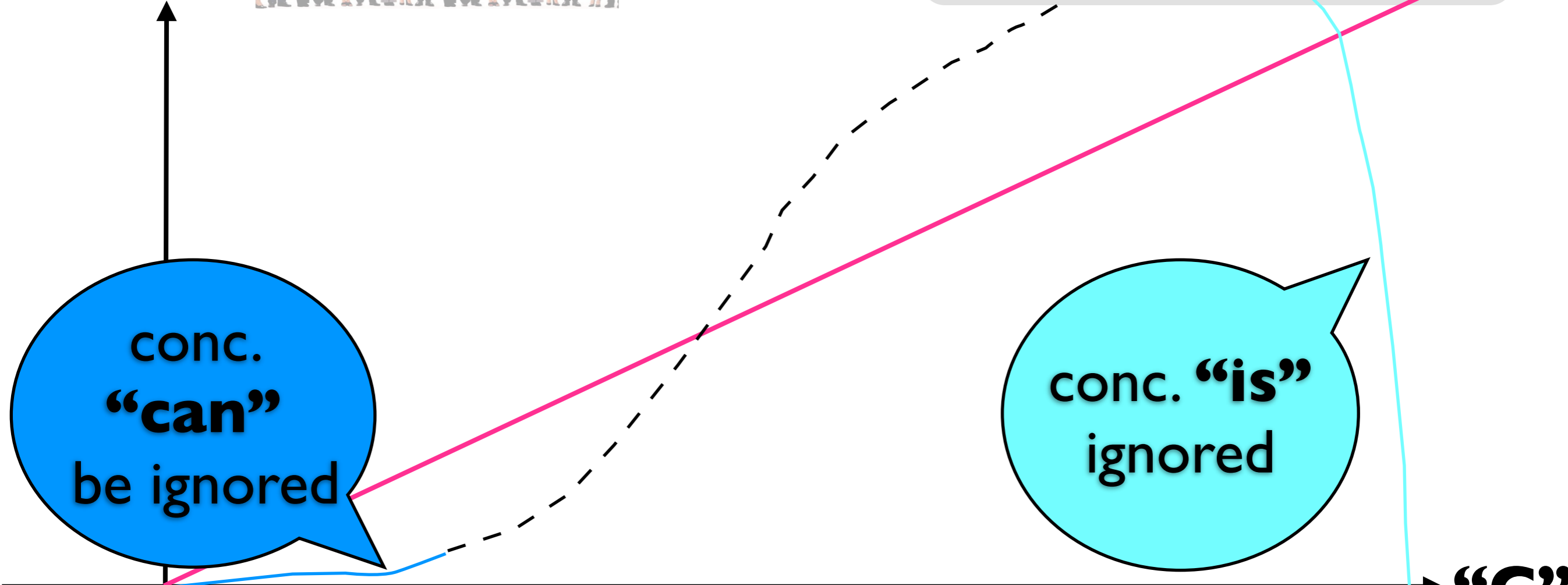
conc.
“can”
be ignored

seq. \subseteq low conc. \subseteq medium conc. \subseteq high conc.

concurrency is hard!(!?)



“H”



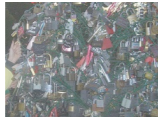
conc.
“can”
be ignored

conc. “is”
ignored

seq. \subseteq low conc. \subseteq medium conc. \subseteq high conc.

concurrency is hard!(!?)

“H”



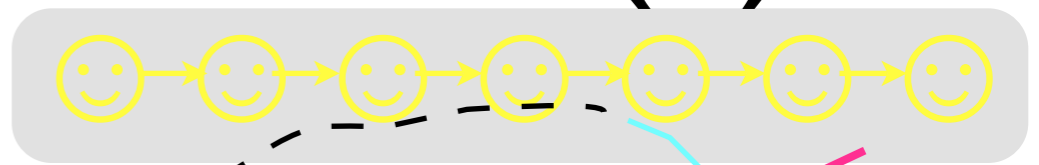
conc.
“can”
be ignored

conc. “is”
ignored

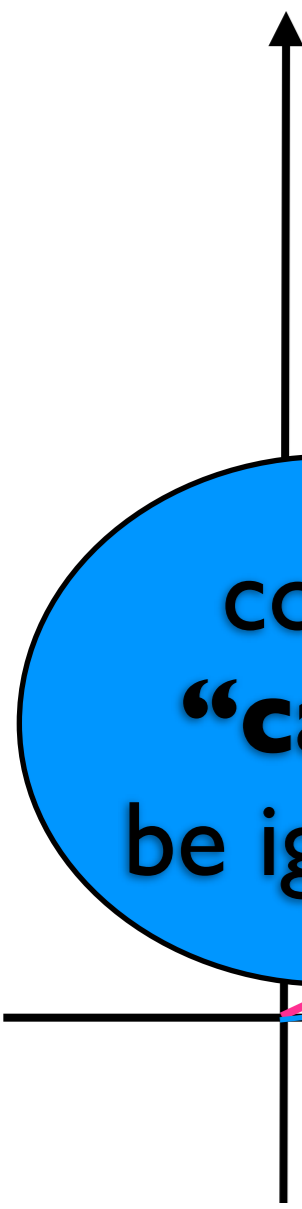


seq. \subseteq low conc. \subseteq medium conc. \subseteq high conc.

concurrency is hard! (?)



“H”



conc.
“can”
be ignored

conc.
“should not”
be ignored(?)

conc.
“must”
be ignored

“C”

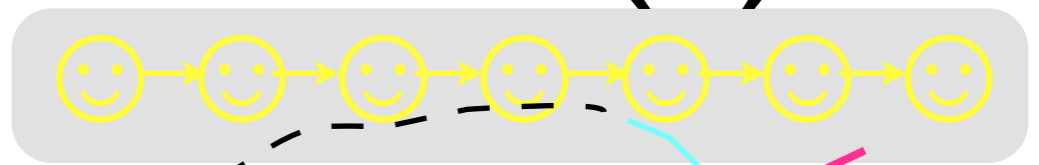


seq. \subseteq low conc. \subseteq medium conc. \subseteq high conc.

concurrency is hard! (?)



“H”



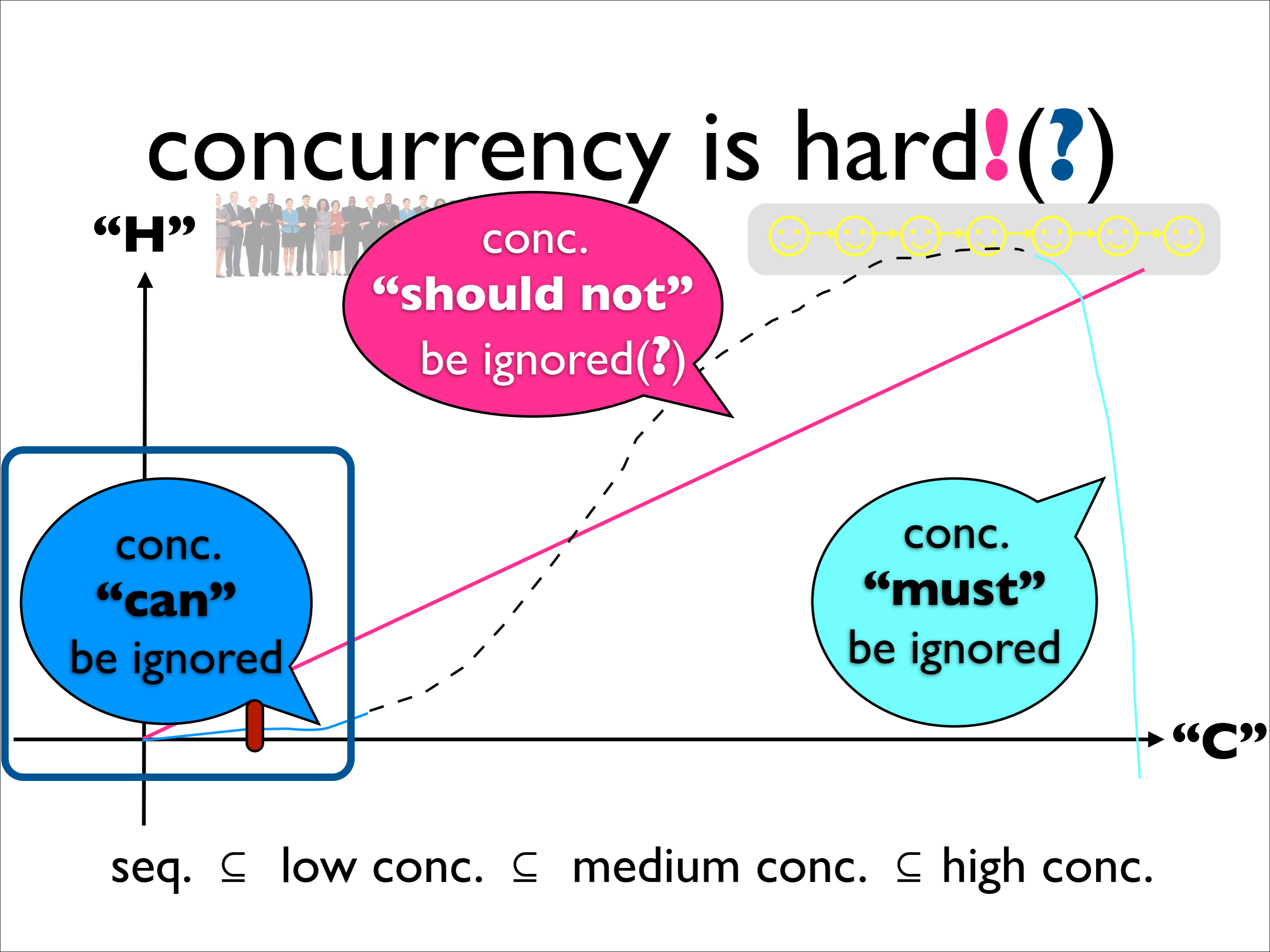
conc.
“should not”
be ignored(?)

conc.
“can”
be ignored

conc.
“must”
be ignored

“C”

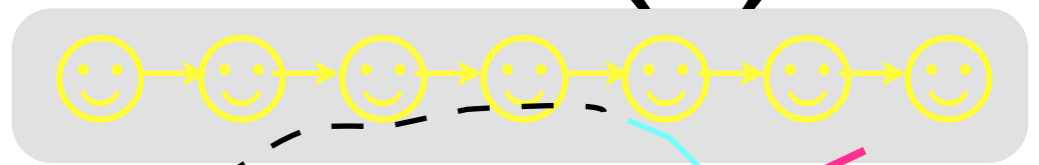
seq. \subseteq low conc. \subseteq medium conc. \subseteq high conc.



concurrency is hard!(!?)



“H”



conc.
“should not”
be ignored(!?)

conc.
“can”
be ignored

conc.
“must”
be ignored

“C”

seq. \subseteq low conc. \subseteq medium conc. \subseteq high conc.

thank you(!)

www.dcs.qmul.ac.uk/~maon/pubs