

Improved Recommendations via (More) Collaboration

Rubi Boim

Haim Kaplan

Tova Milo

Ronitt Rubinfeld

Goal

Multi-organization / domain collaboration for improved recommendations

Difficulties

Impractical to centralize:

- CF algorithms do not scale linearly
- Constant updates
- Privacy

Distributed environment:

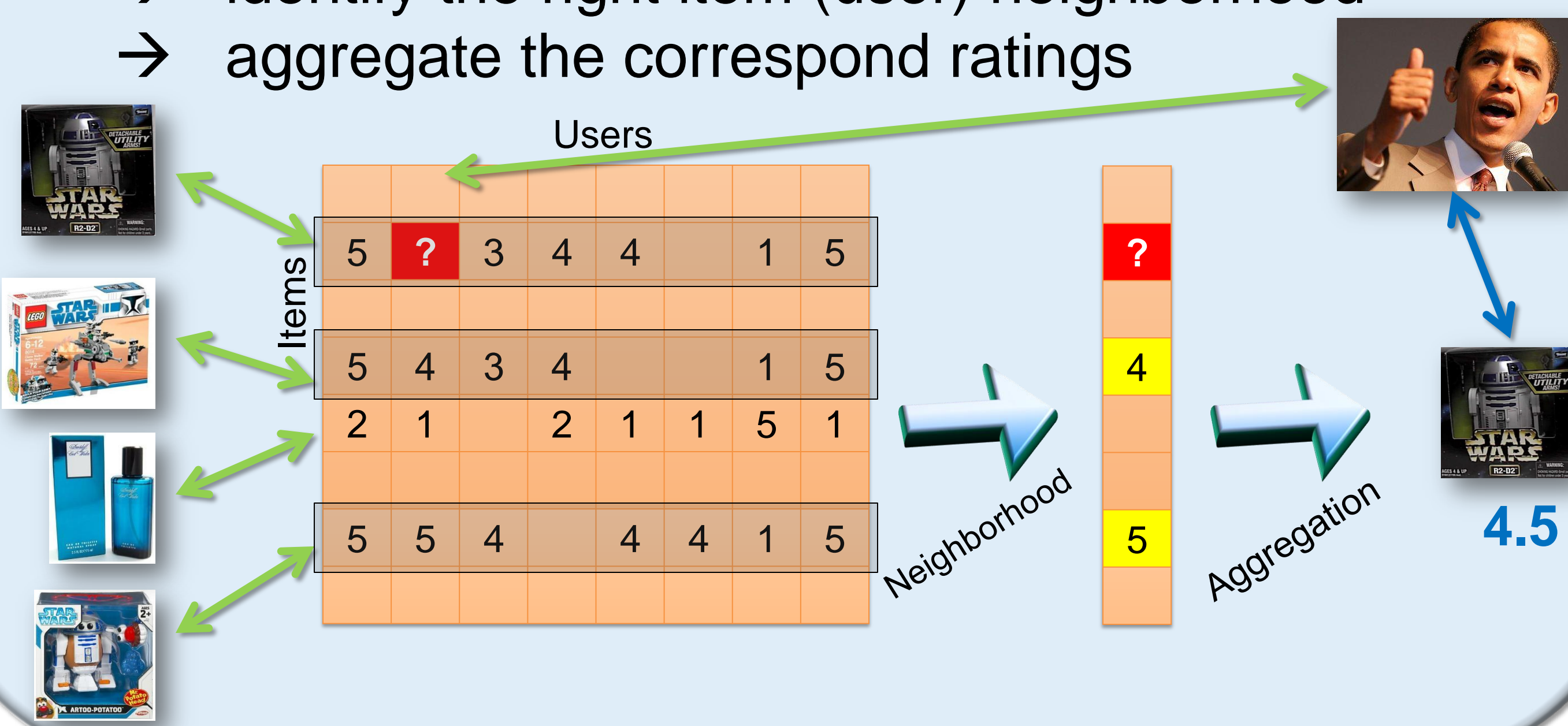
- Bandwidth (expensive to send the entire vector)

Standard CF (Centralized)

- Item-based
- User-based

Main idea:

- identify the right item (user) neighborhood
- aggregate the correspond ratings



Solutions

Dimension Reduction

$$\text{Ratings Matrix} * M = \text{Reduced Matrix}$$

Difficulties: standard reduction techniques (SVD, etc.) needs to see all data to compute **M**

- 😊 Reduction by 'random independent matrix' (Ailon)
- 😞 Can't be applied with "Shared Users" nor Pearson

Dimension Selection

Manually choose the best representatives



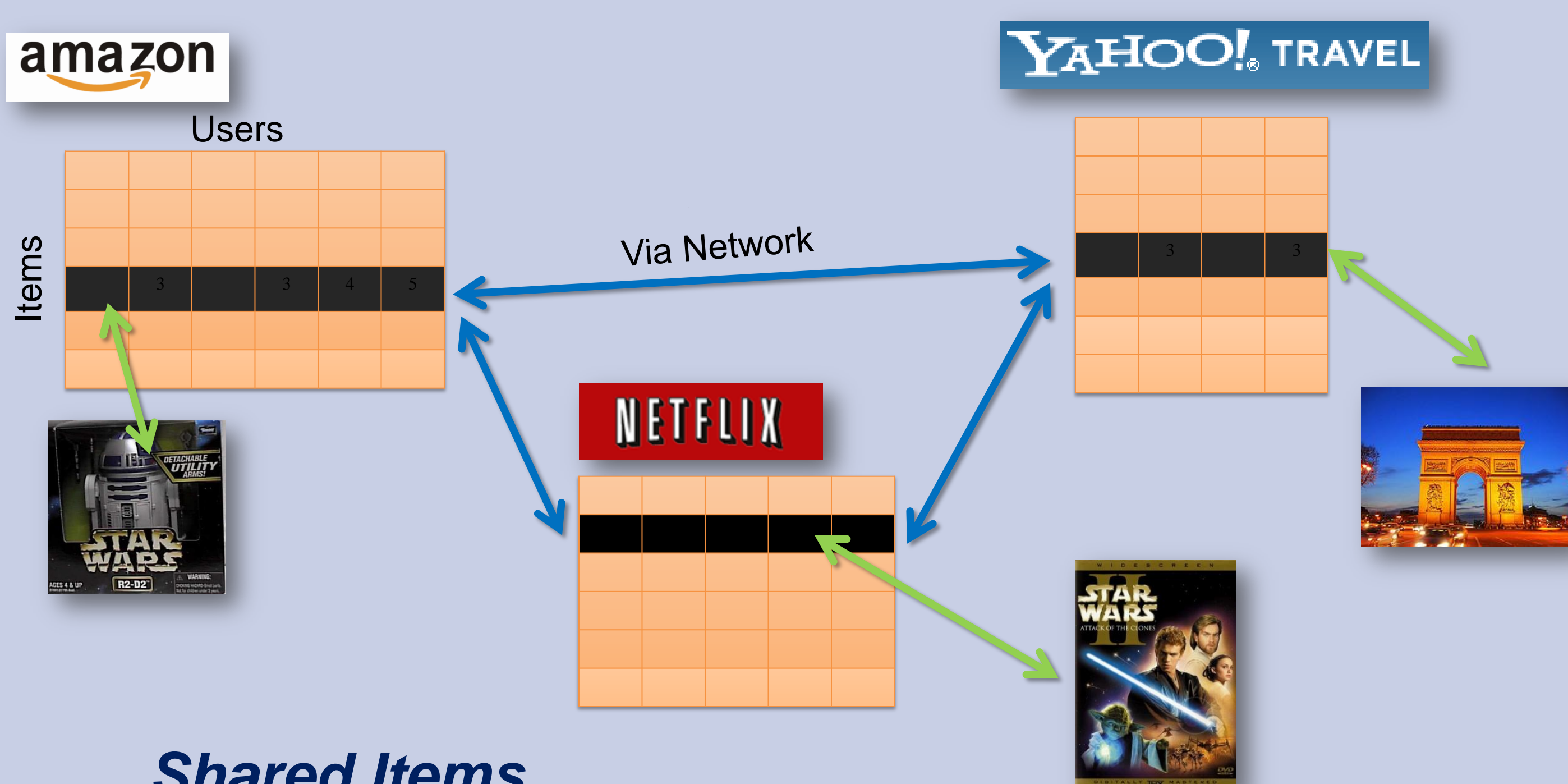
- 😞 Proved to be **NP-Complete**
- 😊 We provide **Greedy algorithm** (no guarantees but impressive results!)
- 😊 Speeds up computation by over 50%!

Distributed CF

A common denominator is required

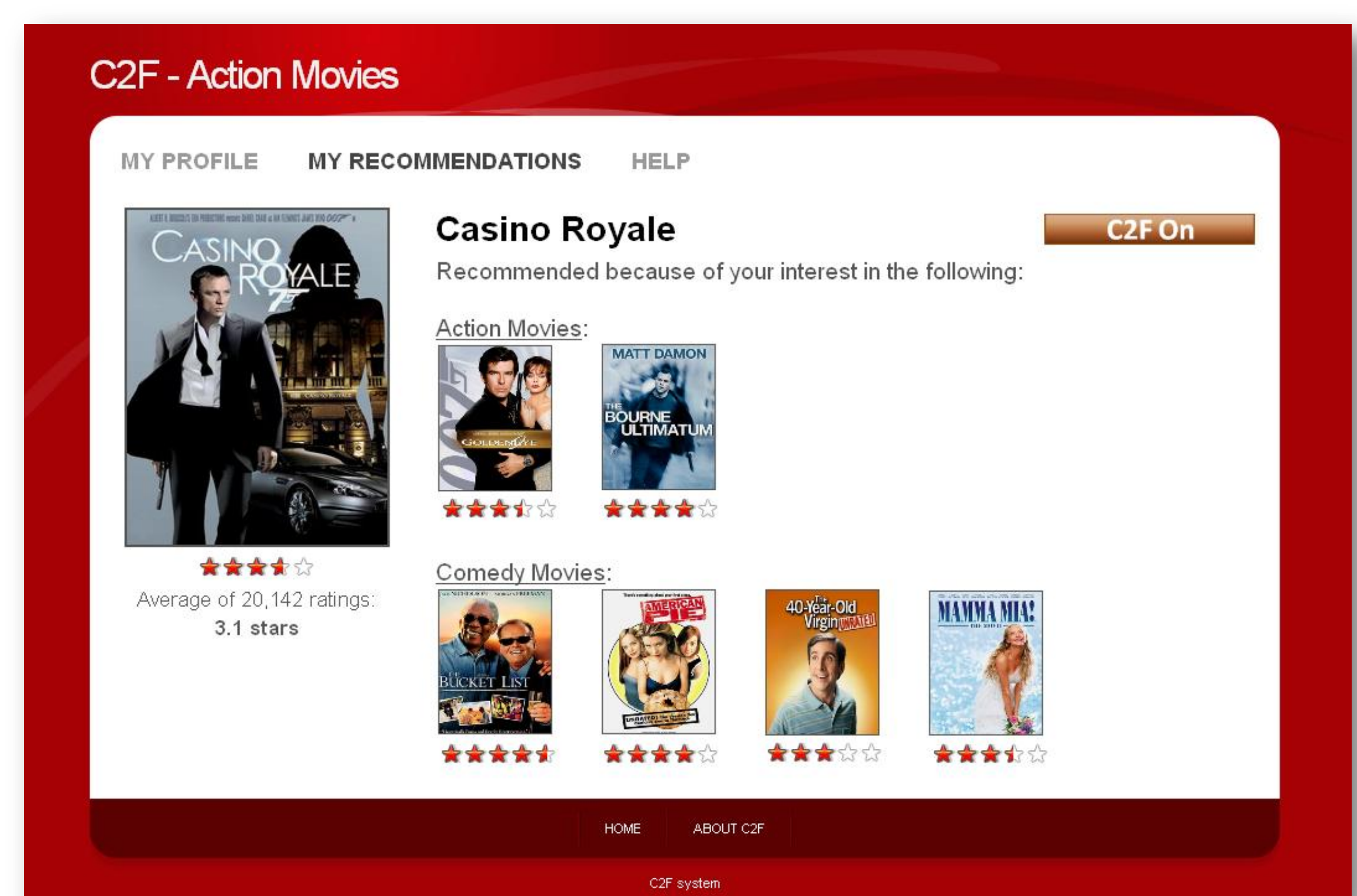
Shared Users

- a (relatively large) set of common users
- example: same users shop at amazon, netflix, etc.



Shared Items

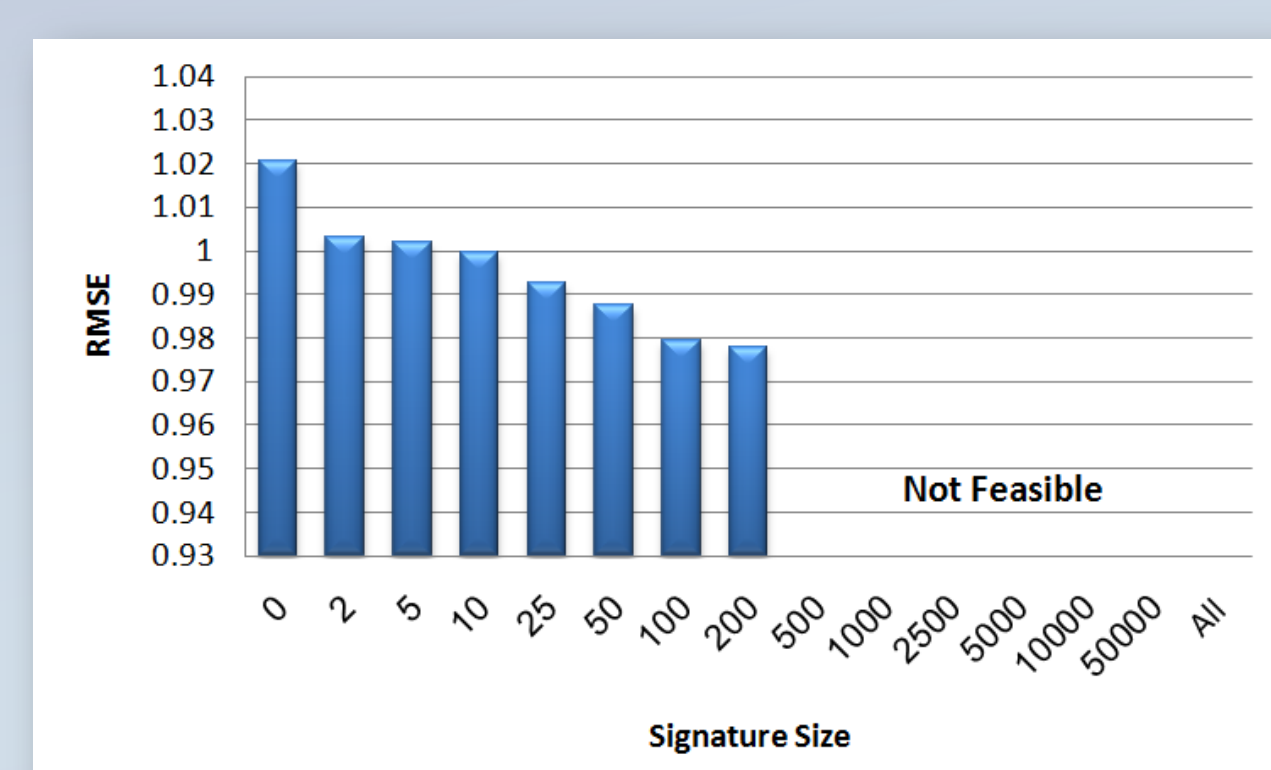
- a (relatively large) set of common items
- examples:
 - Blockbuster branches in different countries
 - Software mirror sites



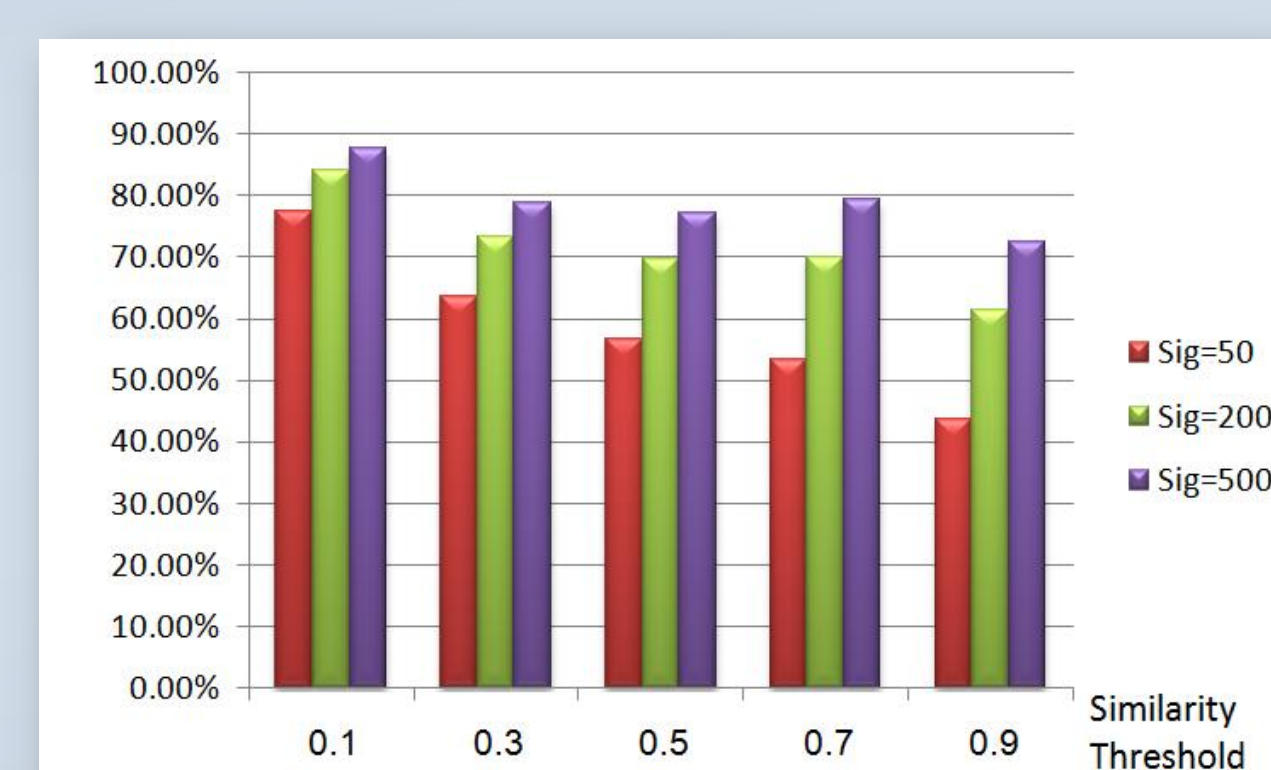
Experimental Results



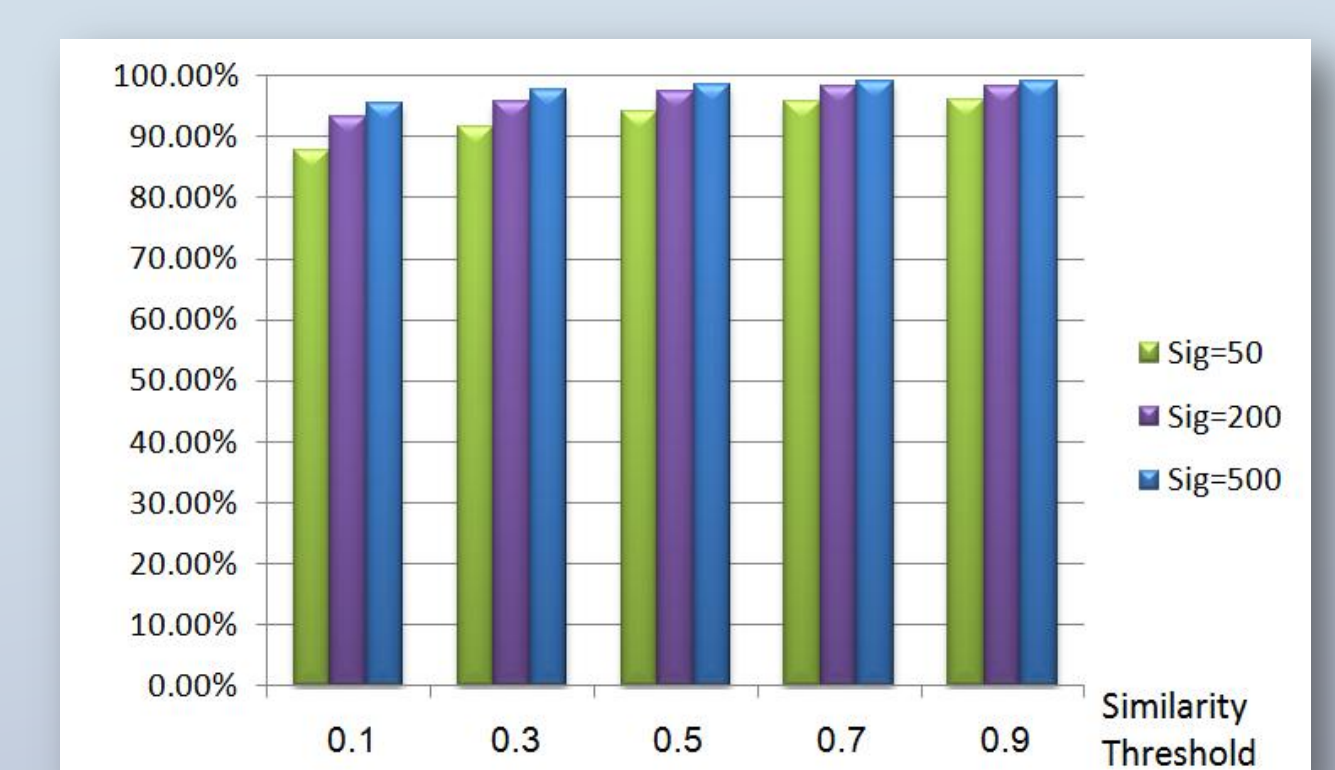
Dimension Selection



Dimension Reduction



DS Neighborhood - Precision



DS Neighborhood - Recall